



University of South Carolina Beaufort

Fact Book 2010-2011



UNIVERSITY OVERVIEW

- History
- Mission
- University Goals
- Accreditation
- Organizational Chart
- Statistical Summary

ENROLLMENT

➤ Student Enrollment

- Fall Enrollment History (Five Years)
- Spring Enrollment History (Five Years)
- Summer Enrollment History (Five Years)
- Enrollment by Program (Major)
- Enrollment by Ethnicity
- Enrollment by FT/PT Status
- Enrollment by Gender
- Enrollment by Student Level
- Enrollment by New/Continuing Status
- Geographic Profile (By County and State)
- International Student Enrollment

➤ Freshmen Profile (First-Time Full-Time)

- Application Information
- Gender and Status
- Ethnicity
- SAT and ACT Scores
- Top Feeder High Schools (within SC)
- By State and SC County

DEGREES AWARDED

- Degrees Awarded by Program

FACULTY AND STAFF

- Faculty by Rank and Gender
- Faculty by Rank and Tenure Status
- Average Fulltime Teaching Faculty Salaries
- Employees by Assigned Position

FINANCIAL INFORMATION

- Current Funds: Revenues and Expenses
- Financial Aid Statistical Summary

GRADUATION AND RETENTION RATES

- All Students in Fall Cohort
- Graduation Rates

HISTORY OF USCB

The University of South Carolina Beaufort, a senior campus of the state's flagship public university system, brings the University of South Carolina's statewide mission of teaching, research, and public service to the Lowcountry of South Carolina. USCB offers baccalaureate degrees that respond to regional needs, draw upon regional strengths, and prepare graduates to contribute successfully in communities locally and around the globe. The curriculum is designed to promote acquisition of knowledge and the intellectual dispositions and skills that encourage depth of understanding, tolerance of others, and individual accountability. With the commitment of Beaufort and Jasper Counties, local donors and extraordinary public-private partnerships, USCB is the system's fastest growing baccalaureate university.

USCB has one of the oldest traditions of higher education in the nation, dating to the 1795 charter of Beaufort College. An act of the South Carolina legislature authorized the college to confer degrees in the liberal arts or sciences "usually conferred in other colleges in Europe and America." The curriculum focused on theoretical science. When the original college building was constructed in 1802, the motto was chiseled onto the cornerstone: "Virtue, Liberty and Science." Four valedictorians of the South Carolina College (which became the University of South Carolina) and two valedictorians at Harvard before the Civil War came from Beaufort College.

Beaufort underwent a profound social revolution during the Civil War—which gave rise to Beaufort College's second legacy: serving as headquarters for the Freedman's Bureau. From 1865 to 1872, this federal agency brought public education to newly freed slaves.

Partnering with the University of South Carolina State and University leaders began discussing ways to increase access to university education in the 1950's and in 1959, the Beaufort College building welcomed 57 students to the University of South Carolina Beaufort, a two year campus in the USC system.

Over the next thirty years, USCB developed an eight acre campus on the waterfront in Beaufort's historic district—constructing buildings, renovating a former elementary school and purchasing historic properties. The University began offering classes on Hilton Head Island in 1985. By the late 1980's, students pursued baccalaureate degrees in several fields through USC Aiken and USC Columbia cooperative programs.

In 1994 International Paper donated eighty acres near Hilton Head Island and Dean Jane Upshaw began a campaign for USCB to become a baccalaureate university. With the support of the community, Beaufort County Council, faculty, staff, students, the Beaufort Jasper Higher Education Commission, the Trustees of the College of Beaufort, USCB was approved to seek baccalaureate accreditation in 2002.

Expanding as a Comprehensive University in August 2004, USCB opened as South Carolina's newest accredited four-year university. Six baccalaureate degrees were offered and the first building opened on the Hilton Head Gateway campus 200 acre site. The next five years saw a science building, high-tech library, on-campus housing, and campus center constructed. Degree programs doubled and USCB Sand Shark athletics debuted, joining the NAIA Sun Conference.

Over 1,700 students now pursue thirteen baccalaureate degrees and more than 1,300 adults participate in the Osher Lifelong Learning Institute at USCB. The Festival Series, USCB's chamber music offering, celebrated its thirtieth and most successful season in 2009. In January 2009, USCB launched its BS in Nursing in new, state of the art facilities—with support from Hilton Head Regional Healthcare, Beaufort Memorial Hospital, the Community Foundation of the Lowcountry, and local donors. A strategic initiative focusing the Historic Beaufort campus on the fine arts has begun with the BA in Studio Art.

Our region's 215-year commitment to university education has remained constant—while the University of South Carolina Beaufort has responded to its needs.

MISSION OF USCB

The University of South Carolina Beaufort, a small (1,000 to 3,000 students/fall headcount enrollment) senior campus of the state's largest public university, brings the University of South Carolina's statewide mission of teaching, research, scholarship, and public service to the rapidly growing Lowcountry of South Carolina. USCB offers baccalaureate degrees that respond to regional needs, draw upon regional strengths, and prepare graduates to participate successfully in communities here and around the globe. The campus also supports the USC Extended Graduate Campus, which provides local access to graduate courses and programs.

USCB offers programs in mathematics and the natural sciences, humanities, and professional and social sciences. Its curriculum is designed to promote acquisition of knowledge and, through it, the intellectual dispositions and skills that encourage depth of understanding, tolerance of others and individual accountability. Attracting a racially and culturally diverse student body of varying ages and experiences, the University of South Carolina Beaufort draws its students primarily from the South Carolina Lowcountry, with representation from other parts of the state, other states, and foreign countries. The University encourages students to think analytically and abstractly, to explore options, to see similarities, to be open to differences, to communicate effectively, and to respect each individual.

The major intellectual and cultural center for the region, the University enriches the quality of life for area residents of all ages through presentations of the performing and fine arts, community service, symposia, research initiatives, and partnerships with area schools, businesses and organizations.

Approved by USC Beaufort Faculty Organization
December 7, 2001

Approved by USC Board of Trustees
February 8, 2002

Approved by South Carolina Commission on Higher Education
June 6, 2002

Revision approved by USC Beaufort Faculty Organization
February 20, 2004

Revision approved by USC President Andrew A. Sorensen
March 1, 2004

Revision Approved by South Carolina Commission on Higher Education
January 8, 2008

UNIVERSITY GOALS

1. Teaching/Learning

USCB will improve the quality of education by expanding its curriculum and stressing disciplinary knowledge and academic skill development characterized by critical inquiry, depth of understanding, accountability, and a commitment to diversity. The University will emphasize research, scholarship, and creative achievement as integral to effective teaching in all academic areas and will promote quality teaching and scholarship by providing appropriate faculty-development support.

2. Research Scholarship and Creative Activity

Recognizing the intrinsic value of research, scholarship, and creativity and their importance to the region and to engaged teaching, the University will foster research, scholarship, and creative activity by recruiting, retaining, and supporting faculty members who are or will become nationally and internationally recognized as highly productive contributors to their fields. The University will assist faculty to identify and compete for extramural funding to support research and creative activities.

3. Service Excellence

USCB will be actively engaged at all levels in making all of our services student-centered, customer-focused, and excellence driven. Our campus and community relationships will be sustained by adherence to our core service values – integrity, collaboration, innovation, responsiveness, accountability, and excellence. Our academic programs will respond to regional needs and promote a high overall quality of life. University members will exhibit good citizenship by using professional and personal expertise to improve our communities. On our campuses, every person and system will be dedicated to fulfilling the academic aspirations of those students who choose to be members of this learning community.

4. Quality of Life in the University Community

USCB will attract the most deserving and promising students at every level, regardless of background and economic circumstance. The University will integrate strong academic programs with cultural and co-curricular experiences to foster a sense of community and quality of life that nurtures the whole person.

5. Recognition, Visibility and Community Involvement

USCB will strive to complement and grow the region's strengths by continuing to develop the University's facilities, programs, activities, and community involvement. The University will increase its visibility by highlighting the accomplishments of students, faculty, and staff. Where possible, USCB will attain appropriate accreditations. It will provide Lowcountry citizens with educational opportunities for lifelong learning and cultural enrichment, and develop and maintain partnerships with other entities to better serve the educational needs of the geographic region.

ACCREDITATION

Southern Association of Colleges and Schools (SACS)

The University of South Carolina Beaufort is accredited by the Commission on Colleges of the Southern Association of Colleges and Schools to award baccalaureate and associate degrees. Contact the Commission on Colleges at 1866 Southern Lane, Decatur, GA 30033-4097 or call 404-679-4500, or web site: www.sacscoc.org for questions about the accreditation of the University of South Carolina Beaufort.

Academic Program Accreditation

The Department of Education

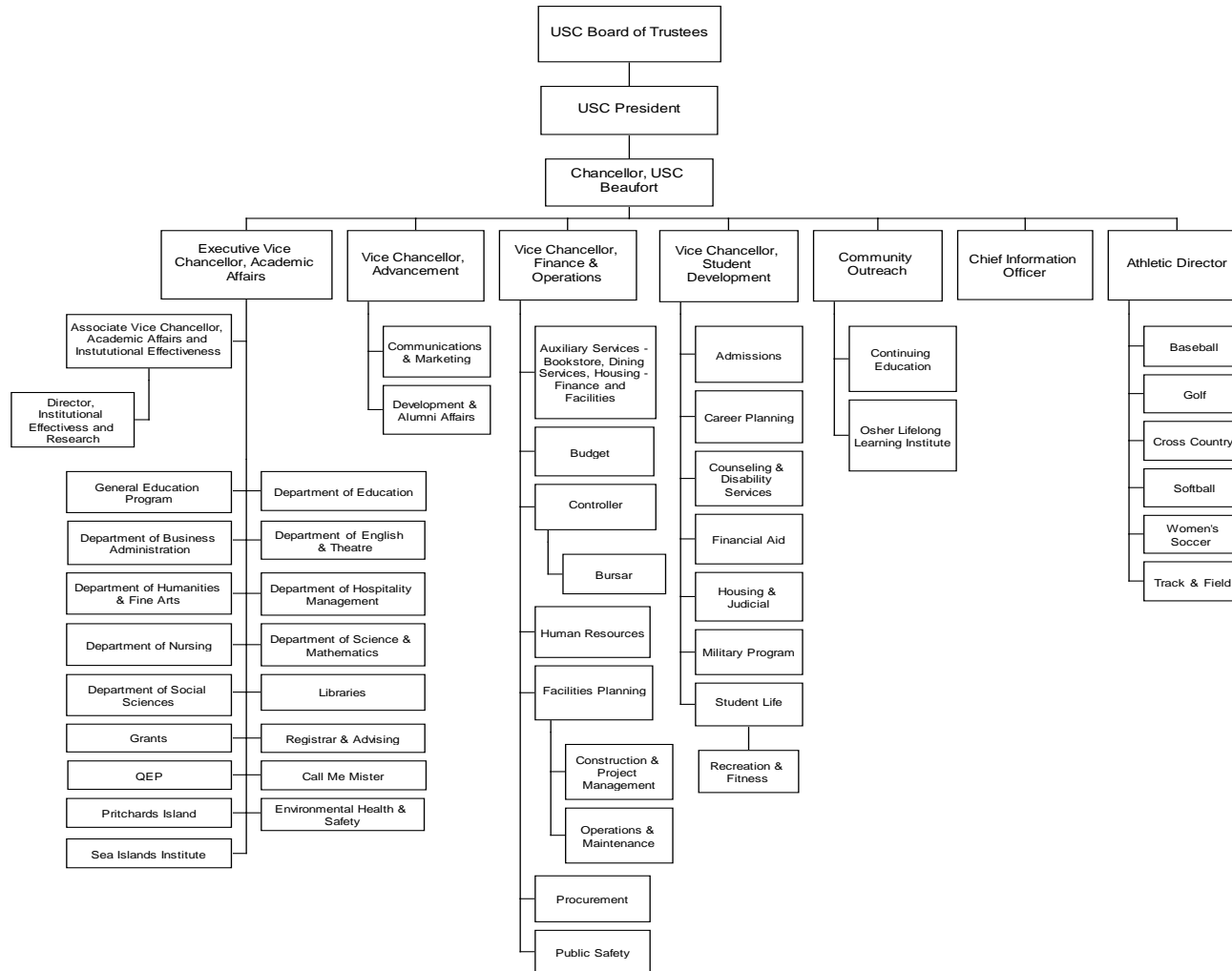
- Accredited by the National Council for Accreditation of Teacher Education (NCATE)
- Early Childhood Education program accredited by the National Association for the Education of Young Children (NAEYC)

The Department of Nursing

- Accredited by the Collegiate Commission on Nursing Education (CCNE)

ORGANIZATIONAL CHART

Areas of Administrative and Operating Responsibilities



STATISTICAL SUMMARY

University Data

School Name <ul style="list-style-type: none">➤ University of South Carolina Beaufort
Hilton Head Gateway Campus Address <ul style="list-style-type: none">➤ One University Blvd., Bluffton, SC 29909
Historic Beaufort Campus Address <ul style="list-style-type: none">➤ 801 Carteret Street, Beaufort, SC 29902
Admissions <ul style="list-style-type: none">➤ Hilton Head Gateway Campus, Hargray Building, (843) 208-8000➤ Historic Beaufort Campus, Sandstone Building, (843) 521-4100➤ Toll Free: (877) 885-5271
School Colors <ul style="list-style-type: none">➤ Navy➤ Sand➤ Garnet

Enrollment Data

Enrollment <ul style="list-style-type: none">➤ 1754
Full-time Equivalency (FTE)* <ul style="list-style-type: none">➤ 1518
Average student age <ul style="list-style-type: none">➤ 24
Gender <ul style="list-style-type: none">➤ 39% Male➤ 61% Female
Race <ul style="list-style-type: none">➤ 16.5% African American➤ 1.5% Asian➤ 6% Hispanic➤ 0.3% Native American➤ 0.2% Hawaiian or Pacific Islander➤ 71% White➤ 1% N/R Alien➤ 1% Unknown➤ 2.5% Two or More Races
Status <ul style="list-style-type: none">➤ 76% Attend full-time➤ 24% Attend part-time

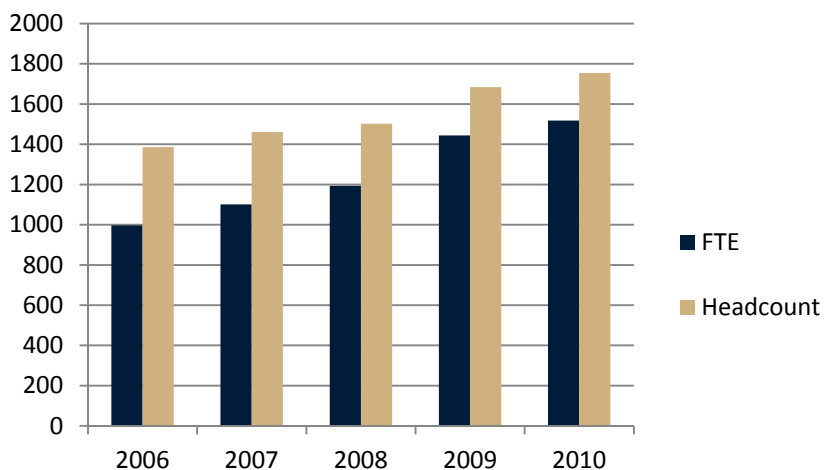
* Total credit hours generated divided by 15

Faculty Data

Full-time instructional faculty <ul style="list-style-type: none">➤ 59
Part-time instructional faculty <ul style="list-style-type: none">➤ 82

STUDENT ENROLLMENT

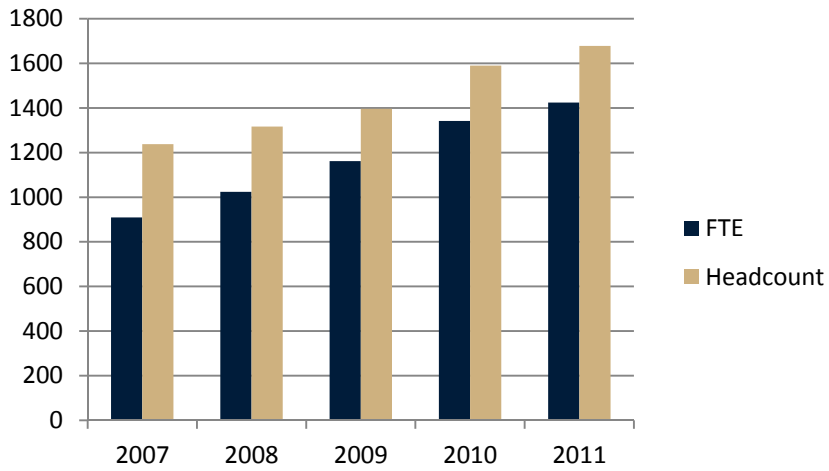
Fall Enrollment History (Five Years)



Fall	Headcount	FTE*
2006	1386	997
2007	1461	1101
2008	1502	1193
2009	1684	1444
2010	1754	1518

* Total credit hours generated divided by 15

Spring Enrollment History (Five Years)

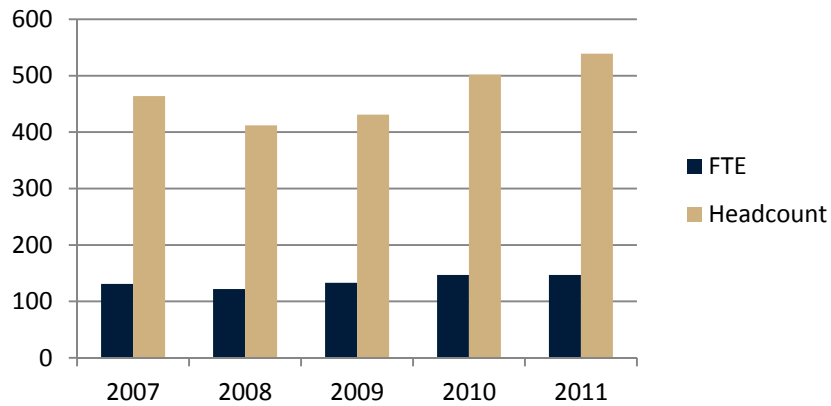


Spring	Headcount	FTE*
2007	1238	909
2008	1317	1024
2009	1396	1162
2010	1590	1342
2011	1678	1424

* Total credit hours generated divided by 15

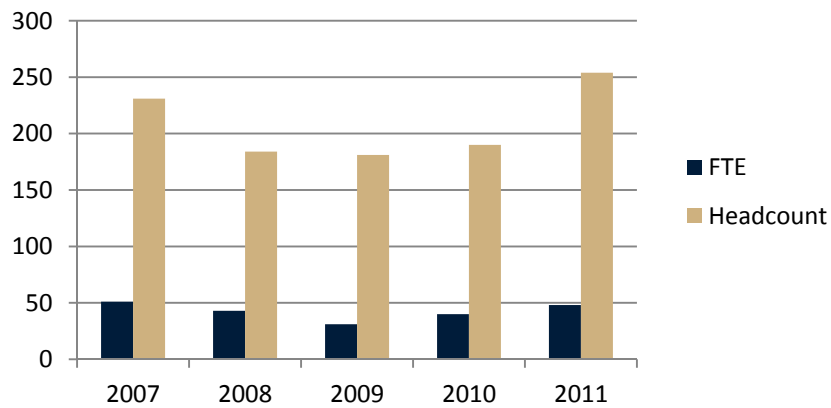
Summer Enrollment History (Five Years)

Summer I (includes Maymester)



Summer I	Headcount	FTE*
2007	464	131
2008	412	122
2009	431	133
2010	502	147
2011	539	147

Summer II



Summer II	Headcount	FTE*
2007	231	51
2008	184	43
2009	181	31
2010	190	40
2011	254	48

* Total credit hours generated divided by 15

Enrollment by Program – Fall

Program	2006	2007	2008	2009	2010
Biology	56	115	91	119	167
Business Administration	211	262	301	332	351
Computational Science					6
Early Childhood Education	117	110	100	136	136
English	56	44	49	45	55
History	26	31	29	44	46
Hospitality Management	94	104	108	153	165
Hospitality Management certificate				1	
Human Services	74	98	85	87	95
Liberal Studies	15	23	29	27	29
Nursing (4 year)			67	177	244
Nursing (RN to BSN)		7	24	18	37
Psychology	56	67	75	100	113
Sociology					3
Spanish	8	12	12	28	17
Studio Art					28
4-Yr No Major	531	471	469	365	250
AA/AS	142	117	63	52	12
Students Enrolled In Programs	1386	1461	1502	1684	1754

Enrollment by Program – Spring

Program	2007	2008	2009	2010	2011
Biology	66	108	78	114	152
Business Administration	224	251	293	340	319
Computational Science					16
Early Childhood Education	101	105	104	115	123
English	51	45	46	50	59
History	26	28	29	44	53
Hospitality Management	98	108	116	150	164
Hospitality Management certificate				1	
Human Services	78	92	87	94	99
Liberal Studies	15	21	16	22	31
Nursing (4 year)			92	180	242
Nursing (RN to BSN)		6	20	18	28
Psychology	61	73	88	94	120
Sociology					5
Spanish	10	13	17	22	17
Studio Art				18	27
4-Yr No Major	384	356	360	291	214
AA/AS	124	111	50	37	9
Students Enrolled In Programs	1238	1317	1396	1590	1678

Enrollment by Program – Summer

Program	<i>Summer I and Maymester Term</i>				
	2007	2008	2009	2010	2011
Biology	30	42	27	30	35
Business Administration	68	82	111	118	124
Computational Science					4
Early Childhood Education	32	13	12	23	30
English	23	17	18	10	17
History	7	10	5	9	14
Hospitality Management	35	44	31	46	60
Human Services	33	30	35	33	29
Liberal Studies	3	3	7	4	8
Nursing (4 year)			44	87	90
Nursing (RN to BSN)		4	3	11	7
Psychology	26	24	27	26	37
Spanish	5	6	8	14	6
Studio Art				9	5
4-Yr No Major	134	106	91	75	69
AA/AS	68	31	12	7	4
Students Enrolled In Programs	464	412	431	502	539

Program	<i>Summer II Term</i>				
	2007	2008	2009	2010	2011
Biology	7	13	12	14	20
Business Administration	62	48	53	45	73
Computational Science					3
Early Childhood Education	22	11	3	3	5
English	9	8	7	4	9
History	3	7	3	3	6
Hospitality Management	11	13	19	32	36
Human Services	21	14	17	13	21
Liberal Studies	4	2	1	2	8
Nursing (4 year)			6	11	18
Nursing (RN to BSN)			3	3	1
Psychology	21	12	20	15	17
Spanish	6	1	1	3	
Studio Art				6	6
4-Yr No Major	58	48	32	35	29
AA/AS	7	7	4	1	2
Students Enrolled In Programs	231	184	181	190	254

Enrollment by Ethnicity

Ethnicity	Fall 2006	Fall 2007	Fall 2008	Fall 2009*	Fall 2010
Non-Resident Alien	23	18	19	17	9
African American	226	244	222	252	290
Native American	13	13	11		
American Indian/ Alaskan Native				9	6
Hawaiian or Pacific Islander				2	3
Asian	24	20	18	16	26
Hispanic	71	55	60	97	111
White	947	1028	1087	1198	1246
Two or more races				60	44
Unknown	82	83	85	33	19
Total	1386	1461	1502	1684	1754

* New race/ethnicity definitions

Enrollment by Full-time/Part-time Status

Status	Fall 2006	Fall 2007	Fall 2008	Fall 2009	Fall 2010
Full-time	781	902	999	1260	1340
Part-time	605	559	503	424	414
Total	1386	1461	1502	1684	1754

Enrollment by Gender

Gender	Fall 2006	Fall 2007	Fall 2008	Fall 2009	Fall 2010
Male	561	577	640	681	677
Female	825	884	862	1003	1077
Total	1386	1461	1502	1684	1754

Enrollment by Student Level

Student Level	Fall 2006	Fall 2007	Fall 2008	Fall 2009	Fall 2010
Freshman	816	804	577	619	673
Sophomore	186	265	264	329	319
Junior	175	177	249	263	274
Senior	209	215	223	363	397
Non-degree seeking			189	110	91
Total	1386	1461	1502	1684	1754

Enrollment by New/Continuing Status

Enrolled Status	Fall 2006	Fall 2007	Fall 2008	Fall 2009	Fall 2010
New Freshman	233	288	303	374	420
New Transfer	130	190	207	254	166
Readmit	86	72	51	44	46
Continuing	846	839	871	1006	1111
Transient	10	1	11	5	10
High School Students	81	71	59	1	1
Total	1386	1461	1502	1684	1754

Geographic Profile (Fall 2010)

State of Origin	#	%	County of Origin	#	%
Alaska	1	0.06%	Aiken	12	0.68%
Alabama	3	0.17%	Allendale	7	0.40%
Arizona	3	0.17%	Anderson	1	0.06%
Arkansas	1	0.06%	Bamberg	8	0.46%
California	5	0.29%	Barnwell	16	0.91%
Colorado	2	0.11%	Beaufort	900	51.31%
Connecticut	7	0.40%	Berkeley	23	1.31%
Florida	28	1.60%	Calhoun	1	0.06%
Foreign Countries	13	0.74%	Charleston	78	4.45%
Georgia	141	8.04%	Clarendon	7	0.40%
Illinois	3	0.17%	Colleton	46	2.62%
Indiana	1	0.06%	Darlington	8	0.46%
Iowa	1	0.06%	Dillon	1	0.06%
Kentucky	1	0.06%	Dorchester	25	1.43%
Maine	1	0.06%	Edgefield	3	0.17%
Maryland	9	0.51%	Fairfield	3	0.17%
Massachusetts	8	0.46%	Florence	9	0.51%
Michigan	8	0.46%	Foreign	13	0.74%
Minnesota	1	0.06%	Georgetown	8	0.46%
Mississippi	1	0.06%	Greenville	12	0.68%
Missouri	3	0.17%	Greenwood	1	0.06%
Montana	1	0.06%	Hampton	71	4.05%
Nevada	1	0.06%	Horry	5	0.29%
New Hampshire	3	0.17%	Jasper	30	1.71%
New Jersey	10	0.57%	Kershaw	2	0.11%
New York	21	1.20%	Lancaster	1	0.06%
North Carolina	15	0.86%	Laurens	1	0.06%
Ohio	12	0.68%	Lexington	29	1.65%
Oregon	1	0.06%	Marlboro	1	0.06%
Pennsylvania	18	1.03%	Oconee	1	0.06%
Puerto Rico	1	0.06%	Orangeburg	19	1.08%
Rhode Island	2	0.11%	Out-of state	341	19.44%
South Carolina	1400	79.82%	Richland	28	1.60%
Tennessee	1	0.06%	Spartanburg	5	0.29%
Texas	7	0.40%	Sumter	10	0.57%
Unknown	7	0.40%	Unknown	2	0.11%
Vermont	3	0.17%	Williamsburg	2	0.11%
Virginia	7	0.40%	York	24	1.37%
West Virginia	1	0.06%	Total	1754	100.00%
Wisconsin	2	0.11%			
Total	1754	100.00%			

International Student Enrollment

Number of International Students	13
----------------------------------	-----------

International Students as a Percentage of Student Enrollment	0.74%
--	--------------

Foreign Countries Represented:

- Austria
- Bermuda
- Bolivia
- Belarus
- Colombia
- Germany
- Guadeloupe
- India
- Republic of Korea
- Lithuania
- Mexico
- United Kingdom

FRESHMEN PROFILE (FALL 2010)

Application Information

Number of Applicants	1390
Number of Applicants Admitted	1027
Number of Admitted Applicants Enrolled	420

Gender and Status

	Full-time	Part-time	Total
Female	242	17	259
Male	152	9	152
Total	394	26	420

Ethnicity

	#	%
Hispanic	33	7.9%
American Indian/ Alaska Native	1	0.2%
Asian	6	1.4%
African American	72	17.1%
Hawaiian or Pacific Islander	1	0.2%
White	295	70.2%
Two or More Races	11	2.6%
Non-Resident Alien	0	0%
Unknown	1	0.2%
Total	420	100%

SAT and ACT Scores

	Students	SAT Math*	SAT Verbal*	SAT Total*	ACT Composite*
Full-time	394	473	466	938	20
Part-time	26	473	469	942	20
Total	420	473	466	939	20

*Average Score

Top Feeder High Schools (within South Carolina)

	#	%
Bluffton High School	56	13.3%
Beaufort High School	31	7.4%
Hilton Head High School	23	5.5%
Wade Hampton High School	17	4.0%
Wando High School	13	3.1%
Battery Creek High School	12	2.9%
Total	152	36.2%

By State and SC County

State of Origin	#	%
Connecticut	4	0.95%
Florida	2	0.48%
Georgia	23	5.48%
Iowa	1	0.24%
Illinois	1	0.24%
Indiana	1	0.24%
Massachusetts	1	0.24%
Maryland	1	0.24%
Michigan	1	0.24%
Montana	1	0.24%
North Carolina	3	0.71%
New Hampshire	1	0.24%
New Jersey	3	0.71%
New York	3	0.71%
Ohio	1	0.24%
Pennsylvania	4	0.95%
South Carolina	364	86.67%
Virginia	2	0.48%
Wisconsin	1	0.24%
Unknown	2	0.48%
Total	420	100.00%

County of Origin	#	%
Aiken	4	0.95%
Bamberg	5	1.19%
Barnwell	7	1.67%
Beaufort	166	39.52%
Berkeley	12	2.86%
Calhoun	1	0.24%
Charleston	22	5.24%
Clarendon	3	0.71%
Colleton	6	1.43%
Darlington	5	1.19%
Dillon	1	0.24%
Dorchester	17	4.05%
Edgefield	1	0.24%
Florence	5	1.19%
Georgetown	5	1.19%
Greenville	9	2.14%
Hampton	20	4.76%
Horry	3	0.71%
Jasper	6	1.43%
Lexington	16	3.81%
Marlboro	1	0.24%
Oconee	1	0.24%
Orangeburg	11	2.62%
Richland	13	3.10%
Spartanburg	3	0.71%
Sumter	6	1.43%
Williamsburg	2	0.48%
York	13	3.10%
Out-of state	56	13.33%
Total	420	100.00%

DEGREES AWARDED BY PROGRAM

	Biology	Business Admin.	Early Childhood Ed.	English	History	Hospitality Mgmt.	Human Services	Liberal Studies	Nursing 4yr - 050	Nursing 4yr RN only Major-051	Psychology	Spanish	Studio Art	AA/AS
2004	Summer	3					5	4						18
	Fall	4	16	2		3	5	5						17
2005	Spring	8	16	3		5	10	7						21
	Summer	3	1	2		2	1	2						8
2006	Fall	11	7	3		4	3	10						12
	Spring	2	6	10	4	1	5	3	6		1	1		19
2007	Summer	0	1	0	0	0	3	4	2		1	0		5
	Fall	1	3	11	8	0	2	6	4		5	0		9
2008	Spring	7	18	7	5	2	3	7	7		6	1		9
	Summer	0	2	0	2	0	5	2	1		2	0		5
2009	Fall	4	12	6	4	3	13	9	3		8	0		7
	Spring	2	16	8	6	3	4	12	5		6	0		12
2010	Summer	1	4	0	0	0	6	3	0		1	0		1
	Fall	2	13	8	1	1	6	3	0		5	0		3
2011	Spring	2	18	2	5	1	4	13	0	5	10	2		1
	Summer	1	8	0	0	2	7	3	0	0	2	0		3
2011	Fall	3	22	14	2	2	5	6	0	0	5	2		1
	Spring	3	35	7	6	6	7	12	4	2	16	1		1
2011	Summer	2	8	0	0	0	13	3	0	1	3	1		0
	Fall	5	22	15	2	0	3	5	3	1	7	1		3
2011	Spring	11	28	8	5	0	6	14	3	27	3	11	2	4
	Summer	3	17	0	0	0	13	6	1	0	4	0	1	1
Total		49	262	136	60	21	119	135	67	27	12	93	11	5

Total Degrees Awarded since 2004

➤ Baccalaureate Degrees

➤ Associate Degrees

1153

997

156

FACULTY AND STAFF INFORMATION

Faculty by Rank and Gender

	Men	Women	Total
Professor*	8	3	11
Associate	10	6	16
Assistant	8	7	15
Instructor	5	12	17
Subtotal	31	28	59
Librarian	1	4	5
Total	32	32	64

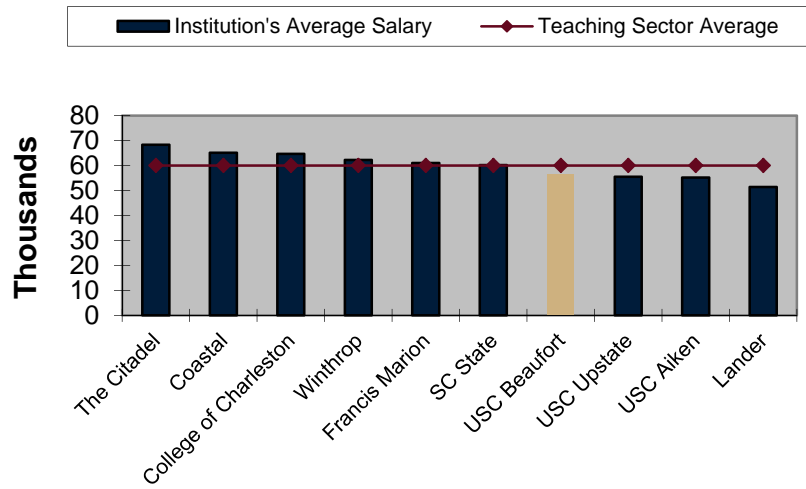
**Professor rank does not include Chancellor or Executive Vice Chancellor for Academic Affairs who serves as Head Librarian*

Faculty by Rank and Tenure Status

	Tenured	On Track	Non-Track	Total
Professor*	11	0	0	11
Associate	9	6	1	16
Assistant	0	13	2	15
Instructor	0	0	17	17
Subtotal	20	19	20	59
Librarian	0	0	5	5
Total	20	19	25	64

**Professor rank does not include Chancellor or Executive Vice Chancellor for Academic Affairs who serves as Head Librarian*

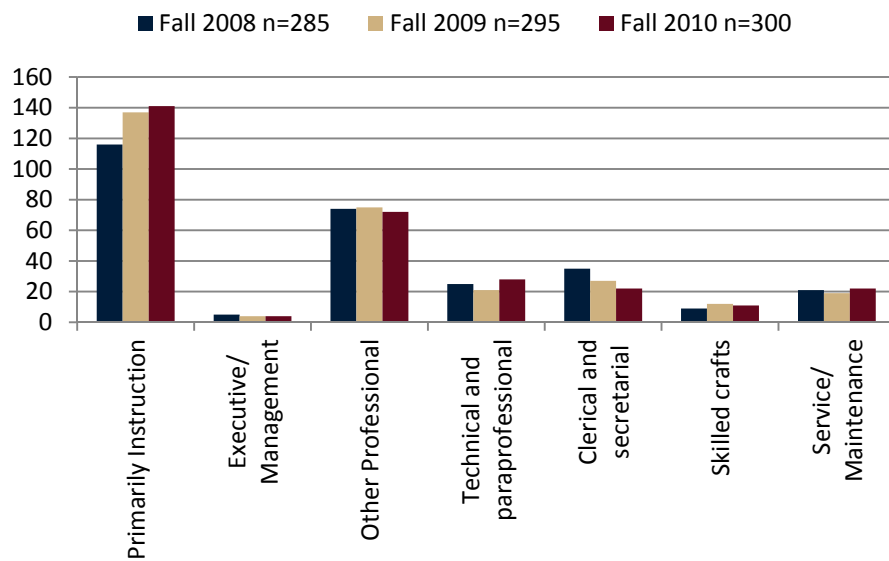
Average Fulltime Teaching Faculty Salaries Fall 2010



	Average Salary
The Citadel	\$68,333
Coastal	\$65,110
College of Charleston	\$64,679
Winthrop	\$62,250
Francis Marion	\$61,004
SC State	\$60,175
USC Beaufort	\$56,393
USC Upstate	\$55,541
USC Aiken	\$55,219
Lander	\$51,388
Teaching Sector Average	\$60,009

Source: CHE Fall 2010 Summary Salary Report

Employees by Assigned Position (Includes Full-time and Part-time)



	Fall 2008	Fall 2009	Fall 2010
Primarily Instruction	116	137	141
Executive/ Management	5	4	4
Other Professional	74	75	72
Technical and paraprofessional	25	21	28
Clerical and secretarial	35	27	22
Skilled crafts	9	12	11
Service/ Maintenance	21	19	22
Total	285	295	300

FINANCIAL INFORMATION

Current Funds: Revenues and Expenses Fiscal Year 2009 – 2010

Reporting based on GASB 34 & 35 standards

REVENUES & ADDITIONS

Operating Revenues

Tuition and Fees (less Discounts & Allowances)	\$8,520,964
Federal operating grants and contracts	\$918,297
State operating grants and contracts	\$1,679,758
Local/private operating grants and contracts	\$206,669
Sales & Services of Auxiliary Enterprises	\$53,296
Sales & Services of Educational Activities	\$440,062
Other	\$367,222
Total Operating Revenues	\$12,186,268

Non-operating Revenues

Federal Appropriations	\$0
State Appropriations	\$1,987,398
Local Appropriations	\$0
Federal non-operating grants	\$2,389,686
Gifts	\$2,257,266
Investment Income	\$228,344
Other Non-operating	\$10,216
Total Non-operating Revenues	\$6,872,910

Other Revenues & Additions

Capital Appropriations	\$0
Capital Grants & Gifts	\$0
Additions to Permanent Endowments	\$0
Other Revenues & Additions	\$53,191
Total Other Revenues & Additions	\$53,191

Total All Revenues & Additions	\$19,112,369
---	---------------------

Current Funds Revenues and Expenses Fiscal Year 2009 – 2010

Reporting based on GASB 34 & 35 standards

EXPENSES & DEDUCTIONS

Operating Expenses & Deductions

Instruction	\$8,618,002
Research	\$531,045
Public Service	\$380,576
Academic Support	\$3,317,651
Student Services	\$3,462,408
Institutional Support	\$1,904,494
Operation & Maintenance of Plant	\$0
Scholarships & Fellowships (less Discounts & Allowances)	\$552,679
Auxiliary Enterprises	\$51,367
Hospital Services	\$0
Independent Operations	\$0
Other Expenses & Deductions	\$0
Total Expenses & Deductions	\$18,818,222

Source: IPEDS Finance Survey

Financial Aid Statistical Summary Academic Year 2009 – 2010

Program	Students *	Awards Received
Pell Grant	586	\$2,230,638
Student Loans	1744	\$7,301,643
Parent Plus Loans	88	\$679,661
LIFE Scholarship	234	\$1,132,612
HOPE Scholarship	93	\$247,131
Palmetto Fellows Sch.	13	\$91,989
SC Need Base Grant	77	\$176,337
USCB Scholarships	62	\$215,787
SEOG **	96	\$62,845
Academic Competitiveness Grant	135	\$102,441
SMART Grant ***	5	\$14,000
USCB Athletic Scholarships	47	\$94,470
USCB Athletic Tuition Waivers	32	\$282,600
Post 9/11 GI Bill	55	\$303,769
MYCAA ****	61	\$172,736
TOTAL		\$13,108,659

- * Students may qualify for multiple programs per Academic Year
- ** Supplemental Educational Opportunity Grant
- *** National Science and Mathematics Access to Retain Talent Grant
- **** Military Spouses Tuition Assistance

Total Financial Aid Applications Processed: 3,052

GRADUATION AND RETENTION RATES

All Students in Fall Cohort First-time/Full-time Freshman Students

Fall Cohort	Head-Count	Average SAT	Retention Rate: 1 Year	Retention Rate: 2 Years	Retention Rate: 3 Years	Retention Rate: 4 Years	Retention Rate: 5 Years	Retention Rate: 6 Years
1997	84	925	55.9%	22.6%	16.6%	8.3%	3.6%	2.4%
1998	101	926	52.4%	36.6%	10.9%	9.9%	5.9%	4.9%
1999	131	931	50.4%	26.7%	19.1%	9.2%	2.3%	2.3%
2000	137	917	49.6%	21.1%	10.9%	5.1%	5.1%	1.5%
2001	109	942	52.3%	25.7%	16.5%	11.9%	10.1%	2.8%
2002	131	890	52.7%	27.5%	16.8%	11.5%	7.6%	1.5%
2003	126	973	43.7%	27.7%	21.4%	8.7%	3.2%	0.0%
2004*	122	977	55.7%	37.7%	31.1%	13.1%	8.2%	
2005	193	959	48.2%	34.2%	26.4%	17.1%		
2006	203	960	54.7%	33.0%	27.6%			
2007	265	944	57.4%	34.3%				
2008	281	974	59.4%					
2009	354	935						

* USCB became a baccalaureate degree-granting institution in 2004.

Cohorts from 2004 on are based on baccalaureate degree seeking students

Graduation Rates

Fall Cohort	Head-count	Average SAT	Grad Associate's Degree (150% of Time)	Grad Bachelor's Degree (150% of Time)	Total Completers within 150% of Time [^]	Transfer-out Percentage
1997	84	925	5.9%	0.0%	5.9%	44.0%
1998	101	926	16.8%	0.0%	16.8%	34.7%
1999	131	931	9.9%	2.3%	12.2%	38.9%
2000	137	917	13.1%	5.8%	18.9%	30.6%
2001	109	942	10.1%	11.0%	21.1%	
2002	131	890	13.0%	12.2%	21.4%	
2003	126	973	3.2%	16.7%	18.3%	
2004*	122	977	1.6%			
2005	195	958				

* USCB became a baccalaureate degree-granting institution in 2004.

Cohorts from 2004 on are based on baccalaureate degree seeking students

[^] Total may not be sum of Associate and Bachelor's graduates since some students might receive both degrees.

Students are only counted once in Total Completers column.

2004 Graduation Rate after 4 Years is 12.3%, after 5 Years Graduation Rate is 16.4%
2005 Graduation Rate after 4 Years is 8.3%