



University of South Carolina Beaufort

Fact Book 2012-2013



UNIVERSITY OVERVIEW

- History
- Mission
- University Goals
- Accreditation
- Organizational Chart
- Statistical Summary

ENROLLMENT

➤ Student Enrollment

- Fall Enrollment History (Five Years)
- Spring Enrollment History (Five Years)
- Summer Enrollment History (Five Years)
- Enrollment by Program (Major)
- Enrollment by Ethnicity
- Enrollment by FT/PT Status
- Enrollment by Gender
- Enrollment by Student Level
- Enrollment by New/Continuing Status
- Geographic Profile (By County and State)
- International Student Enrollment

➤ Freshmen Profile (First-Time Full-Time)

- Application Information
- Gender and Status
- Ethnicity
- SAT and ACT Scores
- Top Feeder High Schools (within SC)
- By State and SC County

DEGREES AWARDED

- Degrees Awarded by Program

FACULTY AND STAFF

- Faculty by Rank and Gender
- Faculty by Rank and Tenure Status
- Average Fulltime Teaching Faculty Salaries
- Employees by Assigned Position

FINANCIAL INFORMATION

- Current Funds: Revenues and Expenses
- Financial Aid Statistical Summary

GRADUATION AND RETENTION RATES

- All Students in Fall Cohort
- Graduation Rates

HISTORY OF USCB

The University of South Carolina Beaufort, a senior campus of the state's flagship public university system, brings the University of South Carolina's statewide mission of teaching, research, and public service to the Lowcountry of South Carolina. USCB offers baccalaureate degrees that respond to regional needs, draw upon regional strengths, and prepare graduates to contribute successfully in communities locally and around the globe. The curriculum is designed to promote acquisition of knowledge and the intellectual dispositions and skills that encourage depth of understanding, tolerance of others, and individual accountability. With the commitment of Beaufort and Jasper Counties, local donors and extraordinary public-private partnerships, USCB is the system's fastest growing baccalaureate university.

USCB has one of the oldest traditions of higher education in the nation, dating to the 1795 charter of Beaufort College. An act of the South Carolina legislature authorized the college to confer degrees in the liberal arts or sciences "usually conferred in other colleges in Europe and America." The curriculum focused on theoretical science. When the original college building was constructed in 1802, the motto was chiseled onto the cornerstone: "Virtue, Liberty and Science." Four valedictorians of the South Carolina College (which became the University of South Carolina) and two valedictorians at Harvard before the Civil War came from Beaufort College.

Beaufort underwent a profound social revolution during the Civil War—which gave rise to Beaufort College's second legacy: serving as headquarters for the Freedman's Bureau. From 1865 to 1872, this federal agency brought public education to newly freed slaves.

Partnering with the University of South Carolina State and University leaders began discussing ways to increase access to university education in the 1950's and in 1959, the Beaufort College building welcomed 57 students to the University of South Carolina Beaufort, a two year campus in the USC system.

Over the next thirty years, USCB developed an eight acre campus on the waterfront in Beaufort's historic district—constructing buildings, renovating a former elementary school and purchasing historic properties. The University began offering classes on Hilton Head Island in 1985. By the late 1980's, students pursued baccalaureate degrees in several fields through USC Aiken and USC Columbia cooperative programs.

In 1994 International Paper donated eighty acres near Hilton Head Island and Dean Jane Upshaw began a campaign for USCB to become a baccalaureate university. With the support of the community, Beaufort County Council, faculty, staff, students, the Beaufort Jasper Higher Education Commission, the Trustees of the College of Beaufort, USCB was approved to seek baccalaureate accreditation in 2002.

Expanding as a Comprehensive University in August 2004, USCB opened as South Carolina's newest accredited four-year university. Six baccalaureate degrees were offered and the first building opened on the Hilton Head Gateway campus 200 acre site. The next five years saw a science building, high-tech library, on-campus housing, and campus center constructed. Degree programs doubled and USCB Sand Shark athletics debuted, joining the NAIA Sun Conference.

Over 1,700 students now pursue thirteen baccalaureate degrees and more than 1,300 adults participate in the Osher Lifelong Learning Institute at USCB. The Festival Series, USCB's chamber music offering, celebrated its thirtieth and most successful season in 2009. In January 2009, USCB launched its BS in Nursing in new, state of the art facilities—with support from Hilton Head Regional Healthcare, Beaufort Memorial Hospital, the Community Foundation of the Lowcountry, and local donors. A strategic initiative focusing the Historic Beaufort campus on the fine arts has begun with the BA in Studio Art.

Our region's 215-year commitment to university education has remained constant—while the University of South Carolina Beaufort has responded to its needs.

MISSION OF USCB

The University of South Carolina Beaufort, a small (1,000 to 3,000 students/fall headcount enrollment) senior campus of the state's largest public university, brings the University of South Carolina's statewide mission of teaching, research, scholarship, and public service to the rapidly growing Lowcountry of South Carolina. USCB offers baccalaureate degrees that respond to regional needs, draw upon regional strengths, and prepare graduates to participate successfully in communities here and around the globe. The campus also supports the USC Extended Graduate Campus, which provides local access to graduate courses and programs.

USCB offers programs in mathematics and the natural sciences, humanities, and professional and social sciences. Its curriculum is designed to promote acquisition of knowledge and, through it, the intellectual dispositions and skills that encourage depth of understanding, tolerance of others and individual accountability. Attracting a racially and culturally diverse student body of varying ages and experiences, the University of South Carolina Beaufort draws its students primarily from the South Carolina Lowcountry, with representation from other parts of the state, other states, and foreign countries. The University encourages students to think analytically and abstractly, to explore options, to see similarities, to be open to differences, to communicate effectively, and to respect each individual.

The major intellectual and cultural center for the region, the University enriches the quality of life for area residents of all ages through presentations of the performing and fine arts, community service, symposia, research initiatives, and partnerships with area schools, businesses and organizations.

Approved by USC Beaufort Faculty Organization
December 7, 2001

Approved by USC Board of Trustees
February 8, 2002

Approved by South Carolina Commission on Higher Education
June 6, 2002

Revision approved by USC Beaufort Faculty Organization
February 20, 2004

Revision approved by USC President Andrew A. Sorensen
March 1, 2004

Revision Approved by South Carolina Commission on Higher Education
January 8, 2008

UNIVERSITY GOALS

1. Teaching/Learning

USCB will improve the quality of education by expanding its curriculum and stressing disciplinary knowledge and academic skill development characterized by critical inquiry, depth of understanding, accountability, and a commitment to diversity. The University will emphasize research, scholarship, and creative achievement as integral to effective teaching in all academic areas and will promote quality teaching and scholarship by providing appropriate faculty-development support.

2. Research Scholarship and Creative Activity

Recognizing the intrinsic value of research, scholarship, and creativity and their importance to the region and to engaged teaching, the University will foster research, scholarship, and creative activity by recruiting, retaining, and supporting faculty members who are or will become nationally and internationally recognized as highly productive contributors to their fields. The University will assist faculty to identify and compete for extramural funding to support research and creative activities.

3. Service Excellence

USCB will be actively engaged at all levels in making all of our services student-centered, customer-focused, and excellence driven. Our campus and community relationships will be sustained by adherence to our core service values – integrity, collaboration, innovation, responsiveness, accountability, and excellence. Our academic programs will respond to regional needs and promote a high overall quality of life. University members will exhibit good citizenship by using professional and personal expertise to improve our communities. On our campuses, every person and system will be dedicated to fulfilling the academic aspirations of those students who choose to be members of this learning community.

4. Quality of Life in the University Community

USCB will attract the most deserving and promising students at every level, regardless of background and economic circumstance. The University will integrate strong academic programs with cultural and co-curricular experiences to foster a sense of community and quality of life that nurtures the whole person.

5. Recognition, Visibility and Community Involvement

USCB will strive to complement and grow the region's strengths by continuing to develop the University's facilities, programs, activities, and community involvement. The University will increase its visibility by highlighting the accomplishments of students, faculty, and staff. Where possible, USCB will attain appropriate accreditations. It will provide Lowcountry citizens with educational opportunities for lifelong learning and cultural enrichment, and develop and maintain partnerships with other entities to better serve the educational needs of the geographic region.

ACCREDITATION

Southern Association of Colleges and Schools (SACS)

University of South Carolina Beaufort is accredited with the Southern Association of Colleges and Schools Commission on Colleges to award baccalaureate and associate degrees. Contact the Commission on Colleges at 1866 Southern Lane, Decatur, Georgia 30033-4097 or call 404-679-4500 for questions.

Academic Program Accreditation

The Department of Education

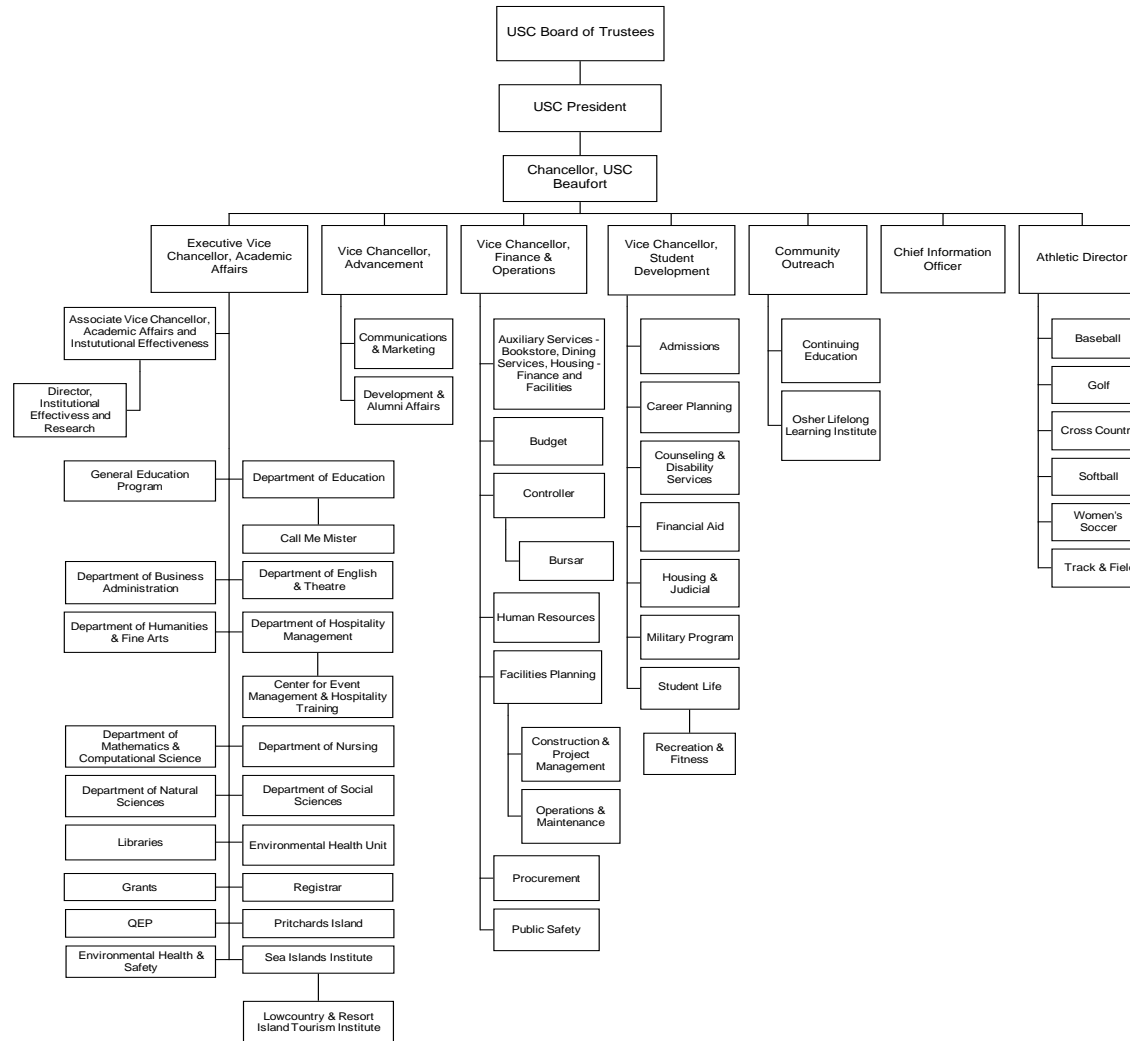
- Accredited by the National Council for Accreditation of Teacher Education (NCATE)
- Early Childhood Education program accredited by the National Association for the Education of Young Children (NAEYC)

The Department of Nursing

- Accredited by the Collegiate Commission on Nursing Education (CCNE)

ORGANIZATIONAL CHART

Areas of Administrative and Operating Responsibilities



STATISTICAL SUMMARY

University Data

School Name <ul style="list-style-type: none">➤ University of South Carolina Beaufort
Hilton Head Gateway Campus Address <ul style="list-style-type: none">➤ One University Blvd., Bluffton, SC 29909
Historic Beaufort Campus Address <ul style="list-style-type: none">➤ 801 Carteret Street, Beaufort, SC 29902
Admissions <ul style="list-style-type: none">➤ Hilton Head Gateway Campus, Hargray Building, (843) 208-8000➤ Historic Beaufort Campus, Sandstone Building, (843) 521-4100➤ Toll Free: (877) 885-5271
School Colors <ul style="list-style-type: none">➤ Navy➤ Sand➤ Garnet
School Mascot <ul style="list-style-type: none">➤ Sand Shark

Enrollment Data

Enrollment <ul style="list-style-type: none">➤ 1,828
Full-time Equivalency (FTE)* <ul style="list-style-type: none">➤ 1,547
Average student age <ul style="list-style-type: none">➤ 24
Gender <ul style="list-style-type: none">➤ 37% Male➤ 63% Female
Race <ul style="list-style-type: none">➤ 19.5% African American➤ 1.2% Asian➤ 6.0% Hispanic➤ 0.4% Native American➤ 0.2% Hawaiian or Pacific Islander➤ 67.2% White➤ 0.4% N/R Alien➤ 1.5% Unknown➤ 3.6% Two or More Races
Status <ul style="list-style-type: none">➤ 76% Attend full-time➤ 24% Attend part-time

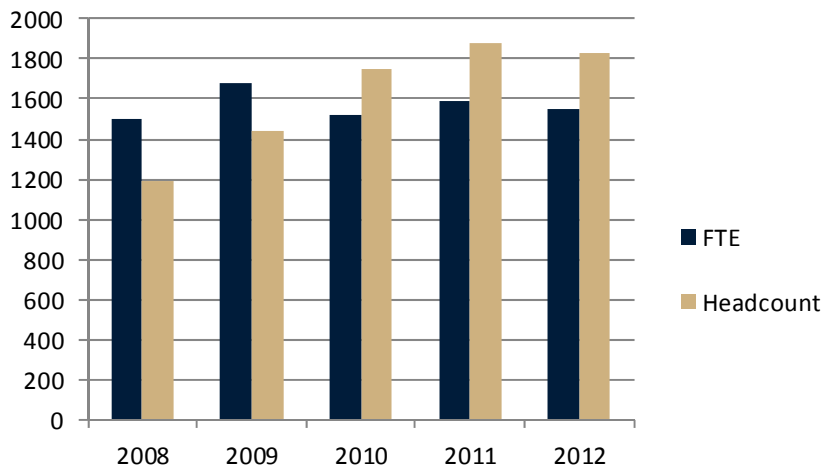
* Total credit hours generated divided by 15

Faculty Data

Full-time instructional faculty <ul style="list-style-type: none">➤ 61
Part-time instructional faculty <ul style="list-style-type: none">➤ 82

STUDENT ENROLLMENT

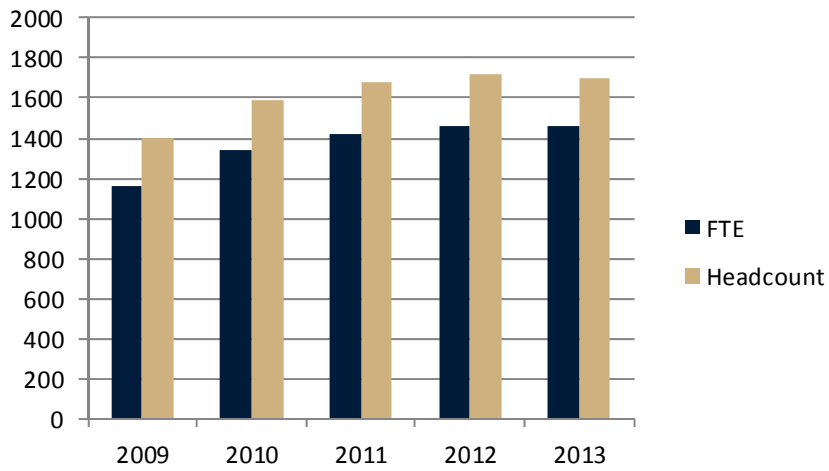
Fall Enrollment History (Five Years)



Fall	Headcount	FTE*
2008	1,193	1,502
2009	1,444	1,684
2010	1,754	1,518
2011	1,874	1,593
2012	1,828	1,547

* Total credit hours generated divided by 15

Spring Enrollment History (Five Years)

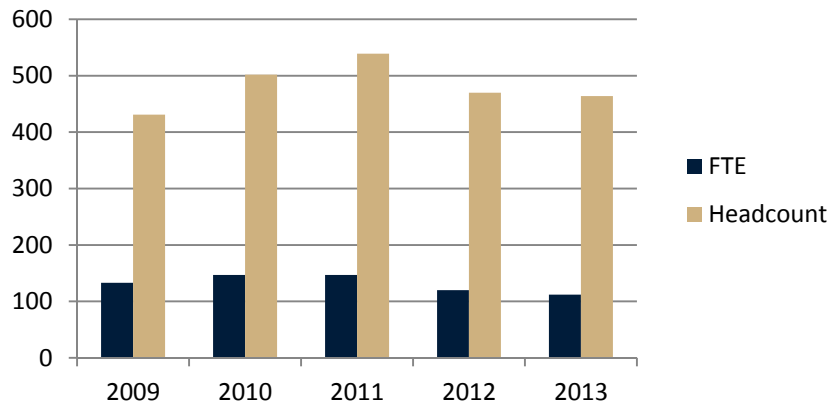


Spring	Headcount	FTE*
2009	1,396	1,162
2010	1,590	1,342
2011	1,678	1,424
2012	1,716	1,458
2013	1,696	1,462

* Total credit hours generated divided by 15

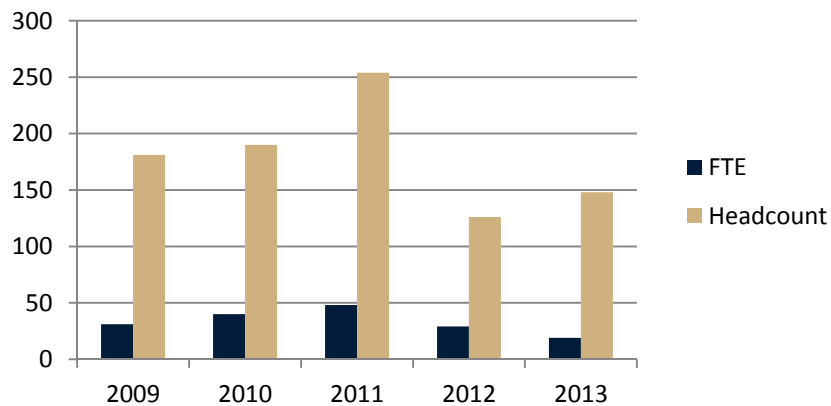
Summer Enrollment History (Five Years)

Summer I (includes Maymester)



Summer I	Headcount	FTE*
2009	431	133
2010	502	147
2011	539	147
2012	470	120
2013	464	112

Summer II



Summer II	Headcount	FTE*
2009	181	31
2010	190	40
2011	254	48
2012	126	29
2013	148	19

* Total credit hours generated divided by 15

Enrollment by Program – Fall

Program	2008	2009	2010	2011	2012
Biology	91	119	167	176	163
Business Administration	301	332	351	381	382
Communication Studies					14
Computational Science			6	30	49
Early Childhood Education	100	136	136	132	111
English	49	45	55	79	70
History	29	44	46	58	49
Hospitality Management	108	153	165	169	174
Hospitality Management certificate		1			
Human Services	85	87	95	83	77
Liberal Studies	29	27	29	25	23
Nursing (4 year)	67	177	244	291	169
Nursing (RN to BSN)	24	18	37	20	32
Psychology	75	100	113	130	150
Sociology			3	12	22
Spanish	12	28	17	23	14
Studio Art			28	31	45
4-Yr No Major	469	365	250	229	277
AA/AS	63	52	12	5	7
Students Enrolled In Programs	1,502	1,684	1,754	1,874	1,828

Enrollment by Program – Spring

Program	2009	2010	2011	2012	2013
Biology	78	114	152	159	136
Business Administration	293	340	319	347	343
Communication Studies					20
Computational Science			16	31	49
Early Childhood Education	104	115	123	116	111
English	46	50	59	75	65
History	29	44	53	53	49
Hospitality Management	116	150	164	162	165
Hospitality Management certificate		1			
Human Services	87	94	99	83	74
Liberal Studies	16	22	31	20	22
Nursing (4 year)	92	180	242	183	171
Nursing (RN to BSN)	20	18	28	16	37
Psychology	88	94	120	129	148
Sociology			5	14	26
Spanish	17	22	17	15	13
Studio Art		18	27	32	43
4-Yr No Major	360	291	214	274	219
AA/AS	50	37	9	6	5
Students Enrolled In Programs	1,396	1,590	1,678	1,716	1,696

Enrollment by Program – Summer

Program	<i>Summer I and Maymester Term</i>				
	2009	2010	2011	2012	2013
Biology	27	30	35	30	35
Business Administration	111	118	124	106	95
Communication Studies	-	-	-	-	3
Computational Science	-	-	4	7	9
Early Childhood Education	12	23	30	16	19
English	18	10	17	15	9
History	5	9	14	9	1
Hospitality Management	31	46	60	55	61
Human Services	35	33	29	25	28
Liberal Studies	7	4	8	4	3
Nursing (4 year)	44	87	90	65	71
Nursing (RN to BSN)	3	11	7	12	22
Psychology	27	26	37	41	30
Sociology	-	-	-	3	5
Spanish	8	14	6	4	4
Studio Art	-	9	5	12	2
4-Yr No Major	91	75	69	65	58
AA/AS	12	7	4	1	-
Students Enrolled In Programs	431	502	539	470	455

Program	<i>Summer II Term</i>				
	2009	2010	2011	2012	2013
Biology	12	14	20	8	9
Business Administration	53	45	73	43	52
Communication Studies	-	-	-	-	2
Computational Science	-	-	3	-	-
Early Childhood Education	3	3	5	6	5
English	7	4	9	5	6
History	3	3	6	2	2
Hospitality Management	19	32	36	9	23
Human Services	17	13	21	6	13
Liberal Studies	1	2	8	1	3
Nursing (4 year)	6	11	18	6	2
Nursing (RN to BSN)	3	3	1	1	2
Psychology	20	15	17	16	13
Sociology	-	-	-	-	2
Spanish	1	3	-	2	-
Studio Art	-	6	6	1	1
4-Yr No Major	32	35	29	20	11
AA/AS	4	1	2	-	2
Students Enrolled In Programs	181	190	254	126	148

Enrollment by Ethnicity

Ethnicity	Fall 2008	Fall 2009*	Fall 2010	Fall 2011	Fall 2012
Non-Resident Alien	19	17	9	9	8
African American	222	252	290	355	357
Native American	11	-	-	-	-
American Indian/ Alaskan Native	-	9	6	8	8
Hawaiian or Pacific Islander	-	2	3	4	3
Asian	18	16	26	27	22
Hispanic	60	97	111	115	109
White	1,087	1,198	1,246	1,281	1,229
Two or more races	-	60	44	57	65
Unknown	85	33	19	18	27
Total	1,502	1,684	1,754	1,874	1,828

* New race/ethnicity definitions

Enrollment by Full-time/Part-time Status

Status	Fall 2008	Fall 2009	Fall 2010	Fall 2011	Fall 2012
Full-time	999	1,260	1,340	1,418	1,392
Part-time	503	424	414	456	436
Total	1,502	1,684	1,754	1,874	1,828

Enrollment by Gender

Gender	Fall 2008	Fall 2009	Fall 2010	Fall 2011	Fall 2012
Male	640	681	677	710	671
Female	862	1,003	1,077	1,164	1,157
Total	1,502	1,684	1,754	1,874	1,828

Enrollment by Student Level

Student Level	Fall 2008	Fall 2009	Fall 2010	Fall 2011	Fall 2012
Freshman	577	619	673	682	662
Sophomore	264	329	319	334	310
Junior	249	263	274	321	317
Senior	223	363	397	436	450
Non-degree seeking	189	110	91	101	89
Total	1,502	1,684	1,754	1,874	1,828

Enrollment by New/Continuing Status

Enrolled Status	Fall 2008	Fall 2009	Fall 2010	Fall 2011	Fall 2012
New Freshman	303	374	420	432	410
New Transfer	207	254	166	247	221
Readmit	51	44	46	42	52
Continuing	871	1,006	1,111	1,132	1,120
Transient	11	5	10	7	6
High School Students	59	1	1	14	19
Total	1,502	1,684	1,754	1,874	1,828

Geographic Profile (Fall 2012)

State of Origin	#	%
Alabama	3	0.16%
Arizona	2	0.11%
California	7	0.38%
Colorado	2	0.11%
Connecticut	8	0.44%
Florida	28	1.53%
Foreign Countries	14	0.77%
Georgia	147	8.04%
Hawaii	2	0.11%
Illinois	6	0.33%
Indiana	2	0.11%
Iowa	2	0.11%
Kansas	1	0.05%
Kentucky	2	0.11%
Maryland	3	0.16%
Massachusetts	7	0.38%
Michigan	1	0.05%
Minnesota	1	0.05%
Missouri	1	0.05%
Nevada	2	0.11%
New Hampshire	2	0.11%
New Jersey	11	0.60%
New York	26	1.42%
North Carolina	13	0.71%
Ohio	9	0.49%
Oregon	1	0.05%
Pennsylvania	11	0.60%
South Carolina	1,478	80.85%
Tennessee	4	0.22%
Texas	5	0.27%
Unknown	6	0.33%
Vermont	3	0.16%
Virginia	11	0.60%
Washington	1	0.05%
West Virginia	2	0.11%
Wisconsin	4	0.22%
Total	1,828	100%

County of Origin	#	%
Aiken	30	1.64%
Allendale	12	0.66%
Anderson	1	0.05%
Bamberg	4	0.22%
Barnwell	7	0.38%
Beaufort	818	44.75%
Berkeley	29	1.59%
Calhoun	1	0.05%
Charleston	116	6.35%
Cherokee	3	0.16%
Chesterfield	6	0.33%
Clarendon	5	0.27%
Colleton	72	3.94%
Darlington	14	0.77%
Dillon	1	0.05%
Dorchester	29	1.59%
Edgefield	3	0.16%
Fairfield	4	0.22%
Florence	7	0.38%
Foreign	14	0.77%
Georgetown	12	0.66%
Greenville	12	0.66%
Hampton	57	3.12%
Horry	4	0.22%
Jasper	51	2.79%
Kershaw	3	0.16%
Lancaster	3	0.16%
Laurens	1	0.05%
Lee	1	0.05%
Lexington	47	2.57%
McCormick	1	0.05%
Newberry	2	0.11%
Oconee	1	0.05%
Orangeburg	9	0.49%
Out-of state	336	18.38%
Richland	50	2.74%
Spartanburg	8	0.44%
Sumter	6	0.33%
Williamsburg	4	0.22%
York	44	2.41%
Total	1,828	100%

International Student Enrollment

Number of International Students	14
----------------------------------	-----------

International Students as a Percentage of Student Enrollment	0.77%
--	--------------

Foreign Countries Represented:

- Bolivia
- Canada
- Croatia
- Ecuador
- Germany
- Guadeloupe
- Jamaica
- Republic of Korea
- Lithuania
- Romania
- South Africa
- Trinidad and Tobago
- United Kingdom

FRESHMEN PROFILE (FALL 2012)

Application Information

Number of Applicants	1,387
Number of Applicants Admitted	1,013
Number of Admitted Applicants Enrolled	410

Gender and Status

	Full-time	Part-time	Total
Female	247	14	261
Male	142	7	149
Total	389	21	410

Ethnicity

	#	%
Hispanic	20	4.88%
American Indian/ Alaska Native	3	0.73%
Asian	3	0.73%
African American	83	20.24%
Hawaiian or Pacific Islander	1	0.24%
White	275	67.07%
Two or More Races	20	4.88%
Non-Resident Alien	3	0.73%
Unknown	2	0.49%
Total	410	100%

SAT and ACT Scores

	Students	SAT Math*	SAT Verbal*	SAT Total*	ACT Composite*
Full-time	389	471	467	938	20
Part-time	21	461	476	936	20
Total	410	470	468	938	20

*Average Score

Top Feeder High Schools (within South Carolina)

	#	%
Hilton Head High School	28	6.83%
Bluffton High School	21	5.12%
Beaufort High School	12	2.93%
Wando High School	11	2.68%
West Ashley High School	10	2.44%
Total	82	20.0%

By State and SC County

State of Origin	#	%
Arizona	1	0.24%
California	1	0.24%
Connecticut	2	0.49%
Florida	2	0.49%
Georgia	37	9.02%
Illinois	1	0.24%
Indiana	1	0.24%
Kansas	1	0.24%
Kentucky	1	0.24%
Massachusetts	2	0.49%
Maryland	2	0.49%
North Carolina	4	0.98%
New Jersey	2	0.49%
New York	8	1.95%
Ohio	1	0.24%
Pennsylvania	1	0.24%
South Carolina	330	80.49%
Virginia	4	0.98%
Vermont	1	0.24%
Wisconsin	3	0.73%
Foreign	3	0.73%
Unknown	2	0.49%
Total	410	100%

County of Origin	#	%
Aiken	17	4.15%
Allendale	2	0.49%
Barnwell	2	0.49%
Beaufort	103	25.12%
Berkeley	12	2.93%
Charleston	55	13.41%
Cherokee	2	0.49%
Chesterfield	3	0.73%
Clarendon	1	0.24%
Colleton	15	3.66%
Darlington	6	1.46%
Dillon	1	0.24%
Dorchester	10	2.44%
Edgefield	2	0.49%
Georgetown	3	0.73%
Greenville	8	1.95%
Hampton	7	1.71%
Horry	1	0.24%
Jasper	6	1.46%
Lancaster	1	0.24%
Lexington	21	5.12%
McCormick	1	0.24%
Newberry	1	0.24%
Orangeburg	3	0.73%
Richland	24	5.85%
Spartanburg	2	0.49%
Sumter	2	0.49%
Williamsburg	2	0.49%
York	17	4.15%
Out-of-State	77	18.78%
Foreign	3	0.73%
Total	410	100%

DEGREES AWARDED BY PROGRAM

		Biology	Business Admin.	Communi- cation Studies	Early Child-hood Ed.	English	History	Hospitality Mgmt.	Human Services	Liberal Studies	Nursing 4yr - 050	Nursing 4yr RN only Major-051	Psychology	Sociology	Spanish	Studio Art	AA/AS
2004	Summer		3						5	4							18
	Fall		4		16	2		3	5	5							17
2005	Spring		8		16	3		5	10	7							21
	Summer		3		1	2		2	1	2							8
2006	Fall		11		7	3		4	3	10							12
	Spring	2	6		10	4	1	5	3	6			1		1		19
2007	Summer	0	1		0	0	0	3	4	2			1		0		5
	Fall	1	3		11	8	0	2	6	4			5		0		9
2008	Spring	7	18		7	5	2	3	7	7			6		1		9
	Summer	0	2		0	2	0	5	2	1			2		0		5
2009	Fall	4	12		6	4	3	13	9	3			8		0		7
	Spring	2	16		8	6	3	4	12	5			6		0		12
2010	Summer	1	4		0	0	0	6	3	0			1		0		1
	Fall	2	13		8	1	1	6	3	0			5		0		3
2011	Spring	2	18		2	5	1	4	13	0		5	10		2		1
	Summer	1	8		0	0	2	7	3	0		0	2		0		3
2012	Fall	3	22		14	2	2	5	6	0		0	5		2		1
	Spring	3	35		7	6	6	7	12	4		2	16		1		1
2013	Summer	2	8		0	0	0	13	3	0		1	3		1		0
	Fall	5	22		15	2	0	3	5	3		1	7		1		3
2014	Spring	11	28		8	5	0	6	14	3	27	3	11		2	4	0
	Summer	3	17		0	0	0	13	6	1	0	0	4		0	1	1
2015	Fall	4	22		5	2	6	8	8	1	0	0	10		4	1	1
	Spring	10	33		16	5	8	6	12	2	32	0	11	2	3	2	1
2016	Summer	1	7		1	2	0	20	3	1	0	0	3	0	0	1	0
	Fall	4	22		3	7	1	6	4	1	0	1	6	0	0	4	2
2017	Spring	11	34	3	16	10	6	15	15	4	29	3	17	2	2	9	2
	Summer	0	13	2	0	0	2	19	4	0	1	0	7	1	0	0	2
Total		79	393	5	177	86	44	193	181	76	89	16	147	5	20	22	164

Total Degrees Awarded since 2004

➤ Baccalaureate Degrees

➤ Associate Degrees

1,697

1,533

164

FACULTY AND STAFF INFORMATION

Faculty by Rank and Gender

	Men	Women	Total
Professor*	8	1	9
Associate	9	4	13
Assistant	11	11	22
Instructor	6	11	17
Subtotal	34	27	61
Librarian	1	5	6
Total	35	32	67

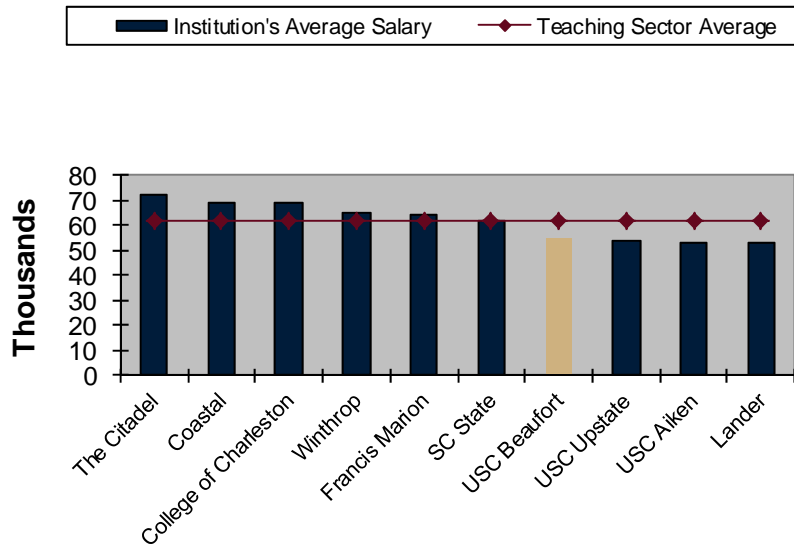
**Professor rank does not include Chancellor or Executive Vice Chancellor for Academic Affairs who serves as Head Librarian*

Faculty by Rank and Tenure Status

	Tenured	On Track	Non-Track	Total
Professor*	8	1	0	9
Associate	7	5	1	13
Assistant	0	21	1	22
Instructor	0	0	17	17
Subtotal	15	27	19	61
Librarian	0	0	6	6
Total	15	27	25	67

**Professor rank does not include Chancellor or Executive Vice Chancellor for Academic Affairs who serves as Head Librarian*

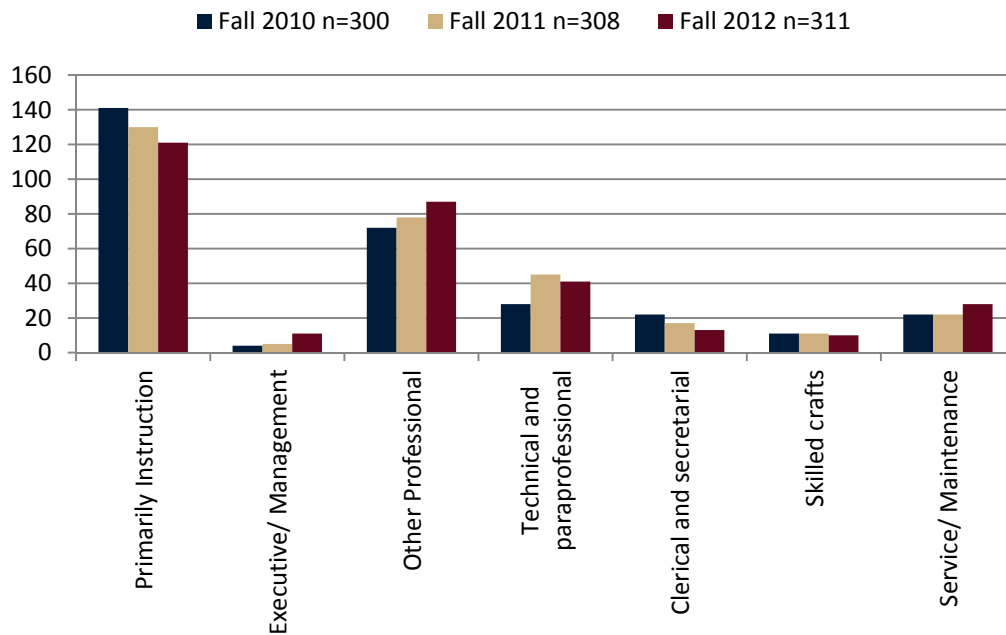
Average Fulltime Teaching Faculty Salaries Fall 2012



	Average Salary
The Citadel	\$72,336
Coastal	\$68,960
College of Charleston	\$68,807
Winthrop	\$65,093
Francis Marion	\$64,487
SC State	\$62,091
USC Beaufort	\$55,013
USC Upstate	\$53,693
USC Aiken	\$52,902
Lander	\$53,336
Teaching Sector Average	\$61,672

Source: CHE Fall 2012 Summary Salary Report

Employees by Assigned Position (Includes Full-time and Part-time)



	Fall 2010	Fall 2011	Fall 2012
Primarily Instruction	141	130	121
Executive/ Management	4	5	11
Other Professional	72	78	87
Technical and paraprofessional	28	45	41
Clerical and secretarial	22	17	13
Skilled crafts	11	11	10
Service/ Maintenance	22	22	28
Total	300	308	311

FINANCIAL INFORMATION

Current Funds: Revenues and Expenses

Fiscal Year 2011 – 2012

Reporting based on GASB 34 & 35 standards

REVENUES & ADDITIONS

Operating Revenues

Tuition and Fees (less Discounts & Allowances)	\$9,809,156
Federal operating grants and contracts	\$755,581
State operating grants and contracts	\$2,114,442
Local/private operating grants and contracts	\$250,906
Sales & Services of Auxiliary Enterprises	\$79,605
Sales & Services of Educational Activities	\$612,044
Other	\$569,630
Total Operating Revenues	\$14,191,364

Non-operating Revenues

Federal Appropriations	\$0
State Appropriations	\$1,484,465
Local Appropriations	\$0
Federal non-operating grants	\$3,201,041
Gifts	\$1,700,667
Investment Income	\$49,741
Other Non-operating	\$1,583
Total Non-operating Revenues	\$6,437,497

Other Revenues & Additions

Capital Appropriations	\$0
Capital Grants & Gifts	\$450,000
Additions to Permanent Endowments	\$0
Other Revenues & Additions	\$5,464
Total Other Revenues & Additions	\$455,464

Total All Revenues & Additions	\$21,084,325
---	---------------------

Current Funds Revenues and Expenses Fiscal Year 2011 – 2012

Reporting based on GASB 34 & 35 standards

EXPENSES & DEDUCTIONS

Operating Expenses & Deductions

Instruction	\$8,982,053
Research	\$841,971
Public Service	\$893,456
Academic Support	\$3,685,840
Student Services	\$3,950,316
Institutional Support	\$1,897,939
Operation & Maintenance of Plant	\$0
Scholarships & Fellowships (less Discounts & Allowances)	\$523,120
Auxiliary Enterprises	\$72,668
Hospital Services	\$0
Independent Operations	\$0
Other Expenses & Deductions	\$0
Total Expenses & Deductions	\$20,847,363

Source: IPEDS Finance Survey

Financial Aid Statistical Summary Academic Year 2011 – 2012

Program	Students *	Awards Received
Pell Grant	833	\$3,188,147
Student Loans	1,334	\$8,497,679
Parent Plus Loans	167	\$1,472,454
LIFE Scholarship	320	\$1,572,304
HOPE Scholarship	101	\$252,000
Palmetto Fellows Sch.	14	\$95,150
SC Need Base Grant	86	\$200,000
USCB Scholarships	62	\$215,787
FSEOG **	106	\$70,025
SC Teachers Loan Program	5	\$21,240
USCB Athletic Scholarships	142	\$237,222
USCB Athletic Tuition Waivers	64	\$529,640
Post 9/11 GI Bill	117	\$842,248
Private Scholarships	35	\$81,600
Yellow Ribbon Program	26	\$83,988
Miscellaneous Loans	46	\$348,575
TOTAL		\$17,573,872

* Students may qualify for multiple programs per Academic Year

** Federal Supplemental Educational Opportunity Grant

Total Financial Aid Applications Processed: 3,791

GRADUATION AND RETENTION RATES

All Students in Fall Cohort

First-time/Full-time Freshman Students

Fall Cohort	Head-Count	Average SAT	Retention Rate: 1 Year	Retention Rate: 2 Years	Retention Rate: 3 Years	Retention Rate: 4 Years	Retention Rate: 5 Years	Retention Rate: 6 Years
1997	84	925	55.9%	22.6%	16.6%	8.3%	3.6%	2.4%
1998	101	926	52.4%	36.6%	10.9%	9.9%	5.9%	4.9%
1999	131	931	50.4%	26.7%	19.1%	9.2%	2.3%	2.3%
2000	137	917	49.6%	21.1%	10.9%	5.1%	5.1%	1.5%
2001	109	942	52.3%	25.7%	16.5%	11.9%	10.1%	2.8%
2002	131	890	52.7%	27.5%	16.8%	11.5%	7.6%	1.5%
2003	126	973	43.7%	27.7%	21.4%	8.7%	3.2%	0.0%
2004*	122	977	55.7%	37.7%	31.1%	13.1%	8.2%	5.7%
2005	193	959	48.2%	34.2%	26.4%	17.1%	5.7%	3.1%
2006	203	960	54.7%	33.0%	27.6%	13.3%	6.9%	3.4%
2007	265	944	57.4%	34.3%	29.8%	21.5%	8.7%	
2008	281	974	59.4%	38.1%	34.9%	18.1%		
2009	354	935	52.3%	36.7%	32.8%			
2010	394	938	53.6%	33.0%				
2011	407	939	50.1%					

* USCB became a baccalaureate degree-granting institution in 2004.

Cohorts from 2004 on are based on baccalaureate degree seeking students

Graduation Rates

Fall Cohort	Head-count	Average SAT	Grad Associate's Degree (150% of Time)	Grad Bachelor's Degree (150% of Time)	Total Completers within 150% of Time [^]	Transfer-out Percentage
1997	84	925	5.9%	0.0%	5.9%	44.0%
1998	101	926	16.8%	0.0%	16.8%	34.7%
1999	131	931	9.9%	2.3%	12.2%	38.9%
2000	137	917	13.1%	5.8%	18.9%	30.6%
2001	109	942	10.1%	11.0%	21.1%	30.3%
2002	131	890	13.0%	12.2%	21.4%	29.0%
2003	126	973	3.2%	16.7%	18.3%	37.3%
2004*	122	977	1.6%	18.8%	19.6%	33.6%
2005	195	958	0.00%	20.7%	20.7%	44.0%
2006	203	960	0.00%	22.7%	22.7%	
2007						

* USCB became a baccalaureate degree-granting institution in 2004.

Cohorts from 2004 on are based on baccalaureate degree seeking students

[^] Total may not be sum of Associate and Bachelor's graduates since some students might receive both degrees. Students are only counted once in Total Completers column.

2006 Graduation Rate after 4 Years is 15%, after 5 Years Graduation Rate is 19%
2007 Graduation Rate after 4 Years is 10%